

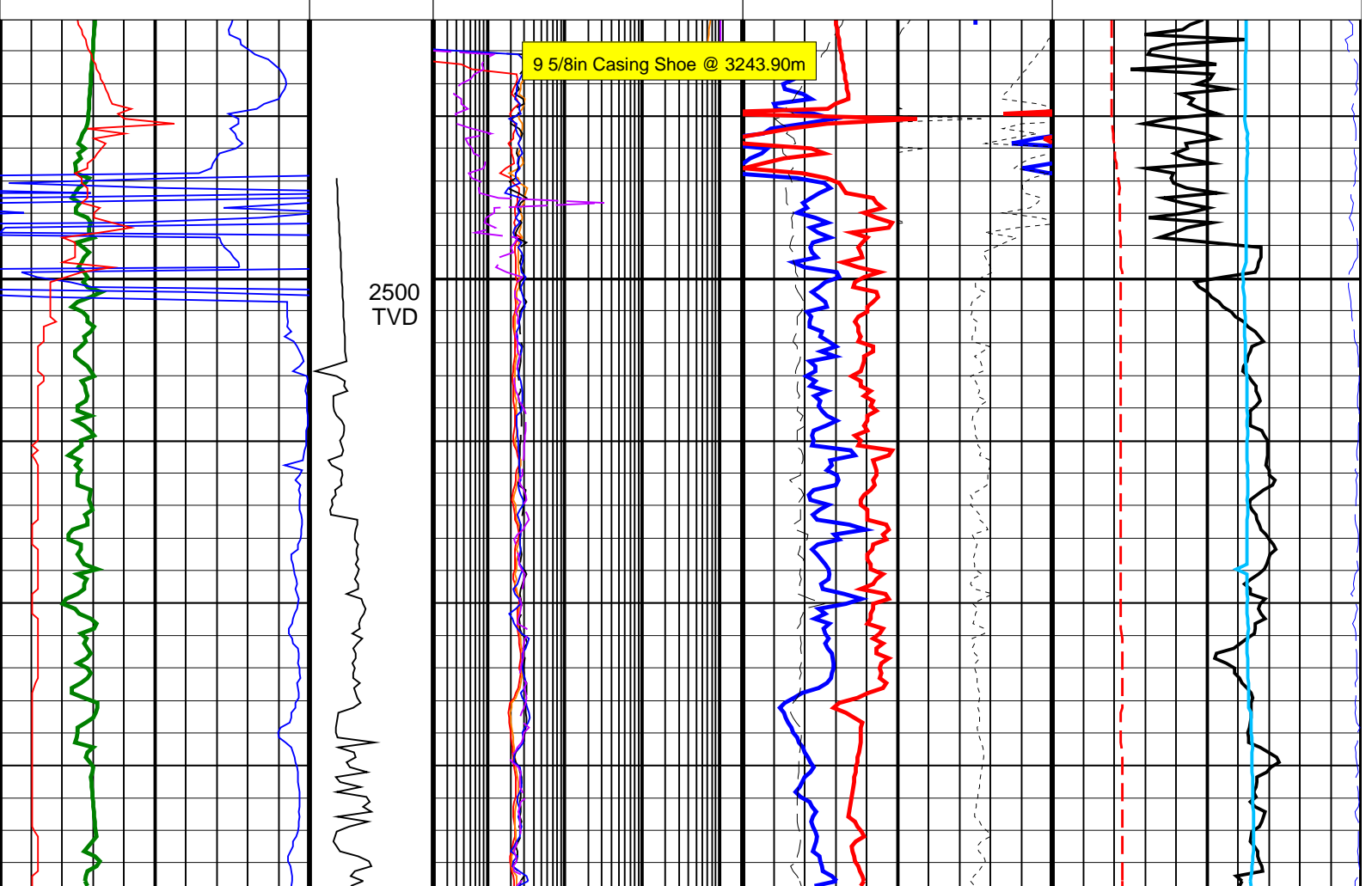
Elver-1 EcoScope Service RT 200TVD

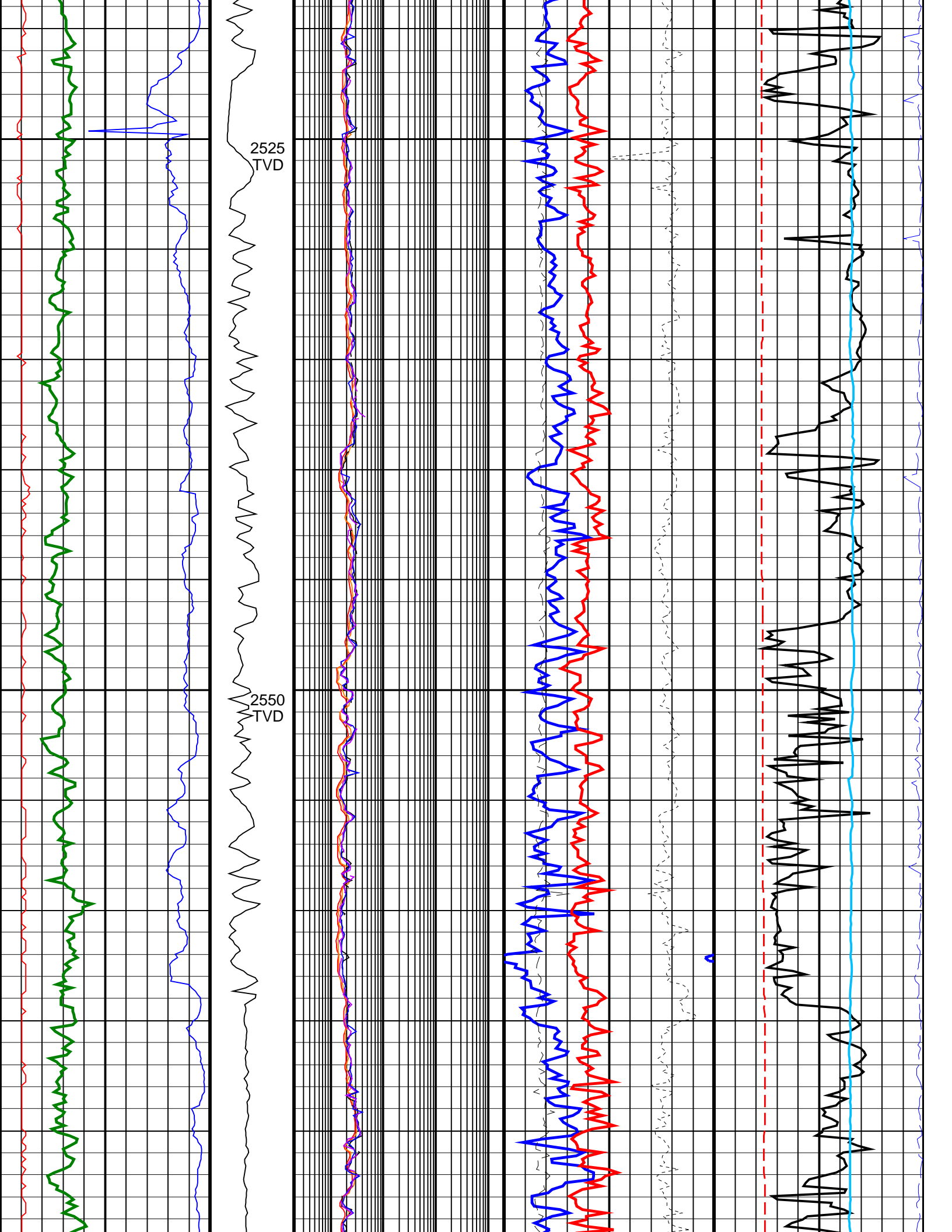
Format: ECO-SON-GVR_200TVD_RT

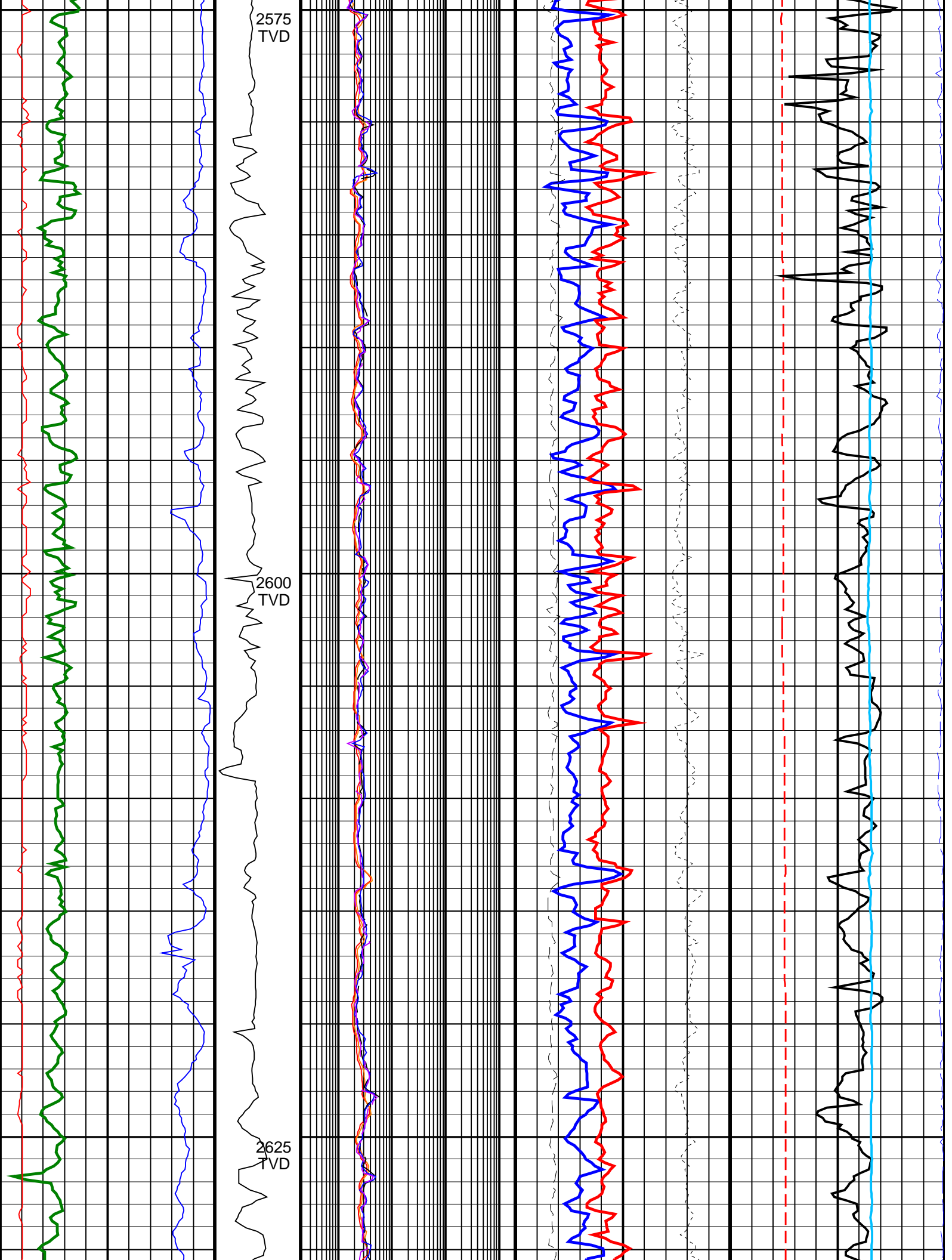
Vertical Scale: 1:200

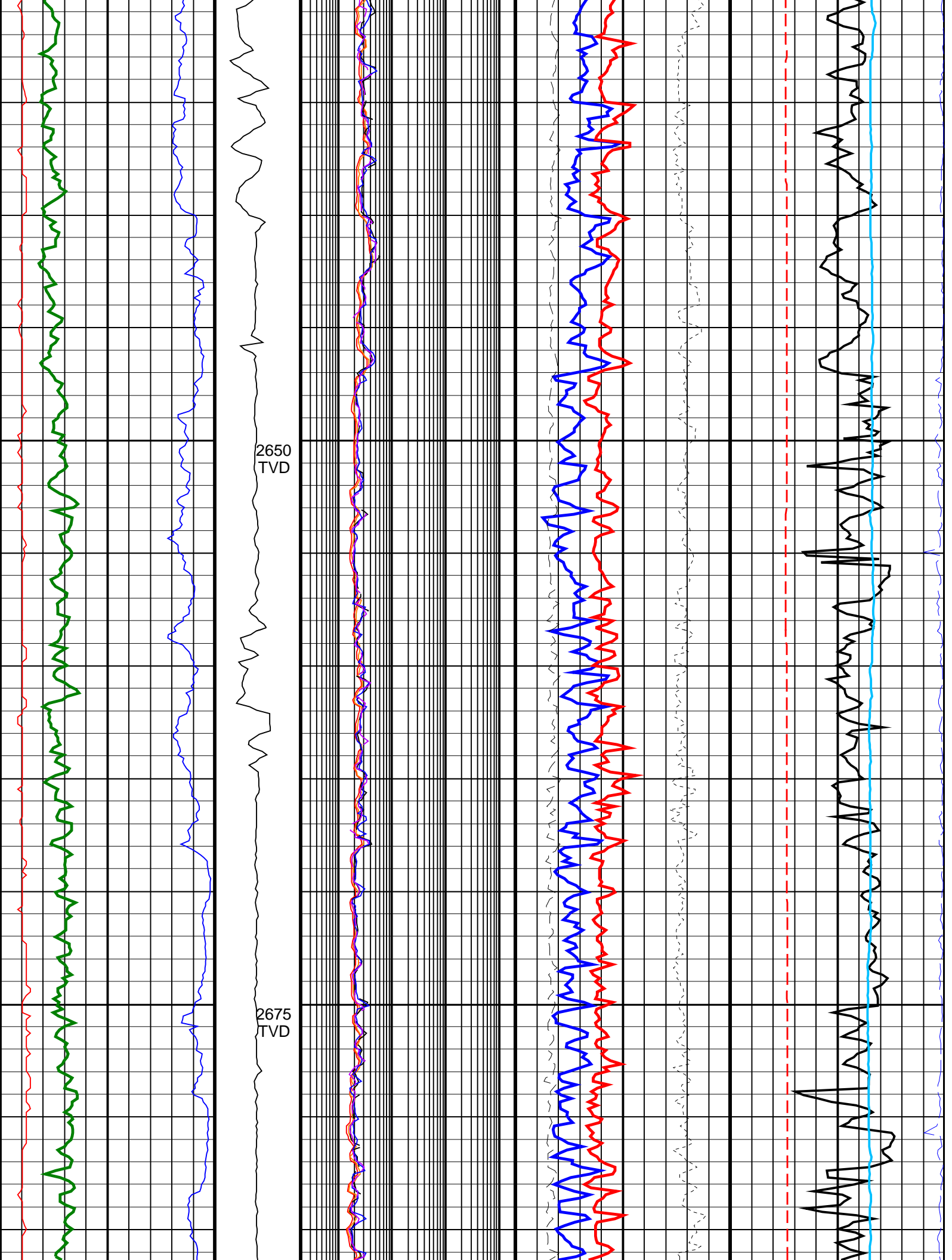
Graphics File Created: 06-Jan-2009 15:28

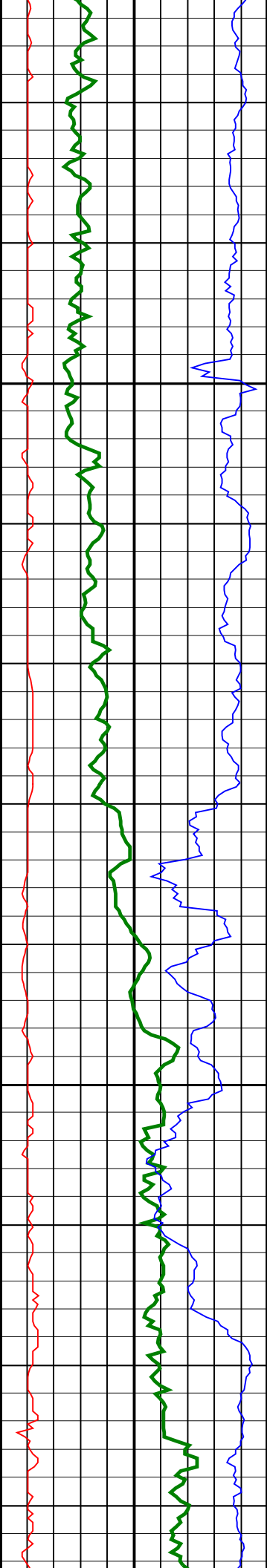
		Shallow Button Resistivity, Real-Time (RES_BS_RT)							
		0.2 (OHMM) 2000							
		Deep Button Resistivity, Real-Time (RES_BD_RT)							
		0.2 (OHMM) 2000				Equivalent Circulating Density, Real-Time (ECD_ECO_RT)			
						0 (G/C3) 2			
Ultrasonic Caliper, Average Diameter, Real-Time, Recomputed at Surface (UCAV_ECO_RT)		Ring Resistivity, Real-Time (RES_RING_RT)		Photoelectric Factor, Bottom, Real-Time, Computed Downhole (PEB_DH_ECO_RT)		Bulk Density Correction, Bottom, Real-Time Computed Downhole (DRHB_DH_ECO_RT)		Delta-T Compressional, Real-Time (DTCO_RT)	
8 (IN) 13		0.2 (OHMM) 2000		0 (----) 10		-0.25 0.25		40 (US/F) 140	
Gamma Ray, Average, Real-Time (GRMA_ECO_RT)		ARC Phase Shift Resistivity 40 inch at 2 MHz, Real-Time (P40H_ECO_RT)		Bulk Density, Bottom, Real-Time, Computed Downhole (ROBB_DH_ECO_RT)		Coherence at Compressional Peak, Real-Time (CHCO_RT)			
0 (GAPI) 200		0.2 (OHMM) 2000		1.95 (G/C3) 2.95		-9 (----) 1			
ROP*5 (ROP5)		MWD Collar RPM (CRPM_RT) (RPM)		ARC Phase Shift Resistivity 16 inch at 2 MHz, Real-Time (P16H_ECO_RT)		Best Thermal Neutron Porosity, Average, Real-Time (BPHI_ECO_RT)		Downhole Annulus Temperature, Real Time, Computed Downhole (DHAT_DH_ECO_RT)	
200 (M/HR) 0		0 400		0.2 (OHMM) 2000		45 (PU) -15		0 (DEGC) 200	











2700
TVD

2725
TVD

